



18th February, 2020

TODAY'S AGENDA

- Welcome to the User Group
- News & Events
- Introduction to the Power Platform
- Demo- Power Apps & Power Automate
- Power Tip
- Networking



MEETING SPONSOR

Thank you for your support!



Welcome to the User Group

 **POWER
PlatformUG**
Power BI • Power Apps • Power Automate

 **D365UG**

User Group

Global group

Founded 2004

Over 280,000 members worldwide

10+ User Group Communities

Member driven

Gold Coast Power Platform & Dynamics 365 focus

Forum to Share ideas and broaden the usage of the platform

Open, sharing and community based

Events

Power Platform & Dynamics 365

3rd Tuesday of the month

[Website](#)



News and Updates



News

Dynamics 365 Wave 1 2020 EARLY ACCESS

Dynamics 365 Commerce GENERAL AVAILABILITY



Events

- 20 Feb Power Platform Happy Hour| Brisbane, Australia
- 27 Feb Dynamics 365 User Group| Brisbane, Australia
- 5 March Power BI User Group| Brisbane, Australia
- 8-12 March Community Summit| Barcelona, Spain
- 12 March Power Apps & Power Automate User Group| Brisbane, Australia
- 13-14 March Microsoft Ignite| Sydney
- 19-21 August Community Summit| Melbourne, Australia



Introduction to the Power Platform

Presented by: Ross Guthrie

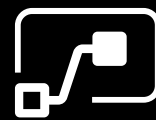




Power BI



PowerApps

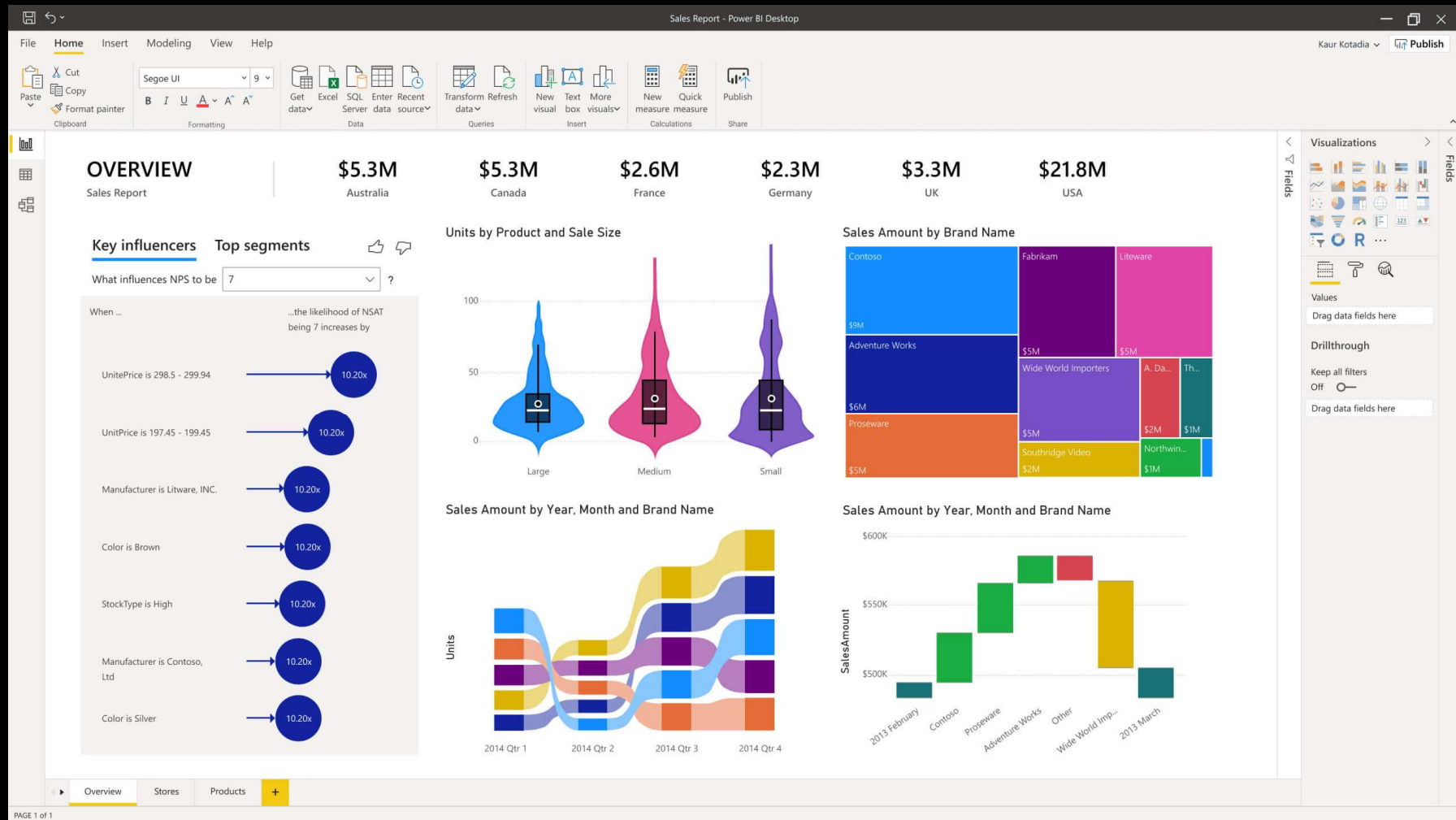


Power Automate





Power BI





Power Automate

Featured Email Productivity Notifications Data collection

Save Office 365 email attachments to OneDrive for Business

By Microsoft
Used 314543 times

Send a customized email when a new SharePoint list item is added

By Microsoft
Used 120500 times

Send a customized email when a new file is added

By Microsoft
Used 103167 times

Record form responses in SharePoint

By Microsoft
Used 90938 times

Click a button to email a note

By Microsoft
Used 66367 times

Send form responses for approval

By Microsoft
Used 51336 times

+ 3

By Microsoft
Used 51336 times

Send approval email when a new item is added

When a new item is created ...

* Site Address

* List Name

Show advanced options ▾

Start an approval ...

* Approval type

* Title

* Assigned to

Details

Item link

Item link description

Show advanced options ▾

Send emailScope ...

Edit in advanced mode Collapse condition

✓ If yes

Send email ...

* To

* Subject

* Body

Show advanced options ▾

✗ If no

Add an action



Power Apps

Power Apps

Environment: Beta F5 NZ (betaf5nz)

Health Plan Selector

File Home Insert View Action

Data sources Media Collections Variables Advanced

OnVisible = fx UpdateContext({multiselect:false})

Tree view

- App
 - HomeScreen
 - icon4
 - TextBox6
 - Button1_9
 - TextBox2_1
 - TextBox2
 - TextBox1_1
 - TextBox1
 - Image1
 - Rectangle1
 - TextInput2
 - Step1_Screen
 - TextBox3
 - Button1_2
 - Button1_1
 - Radio1
 - TextBox1_4
 - Circle1_3
 - Circle1_2
 - Circle1_1
 - Circle1_20
 - Circle1_4
 - Rectangle2
 - icon1

SCREEN: Step2_Screen

Properties: Advanced

Search for a property ...

ACTION

OnVisible: UpdateContext({multiselect:false})

OnHidden:

DATA

BackgroundImage:

DESIGN

Fill: RGBA(255,255,255,1)

ImagePosition: ImagePosition.Fit

Height: Max(App.Height, App.DesignHeight)

More options

MEDICAL INSURANCE PLAN SELECTOR

STEP 2

What coverage is most important to you?

(Select all that apply)

ADD-ONS

- Non-traditional medicine
- Outpatient care
- Pediatric
- Prescriptive drugs
- Mental health and substance abuse
- Rehabilitation

BACK NEXT

Step2_Screen

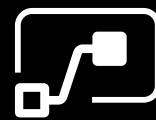
70 %



Power BI



Power Apps



Power Automate



Common Data
Service



Power BI



Power Apps



Power Automate



Common Data
Service



Common
Data Model



Common
Data Model

- It is the **schema**
- It is the “**plan**”

Vs



Common Data
Service

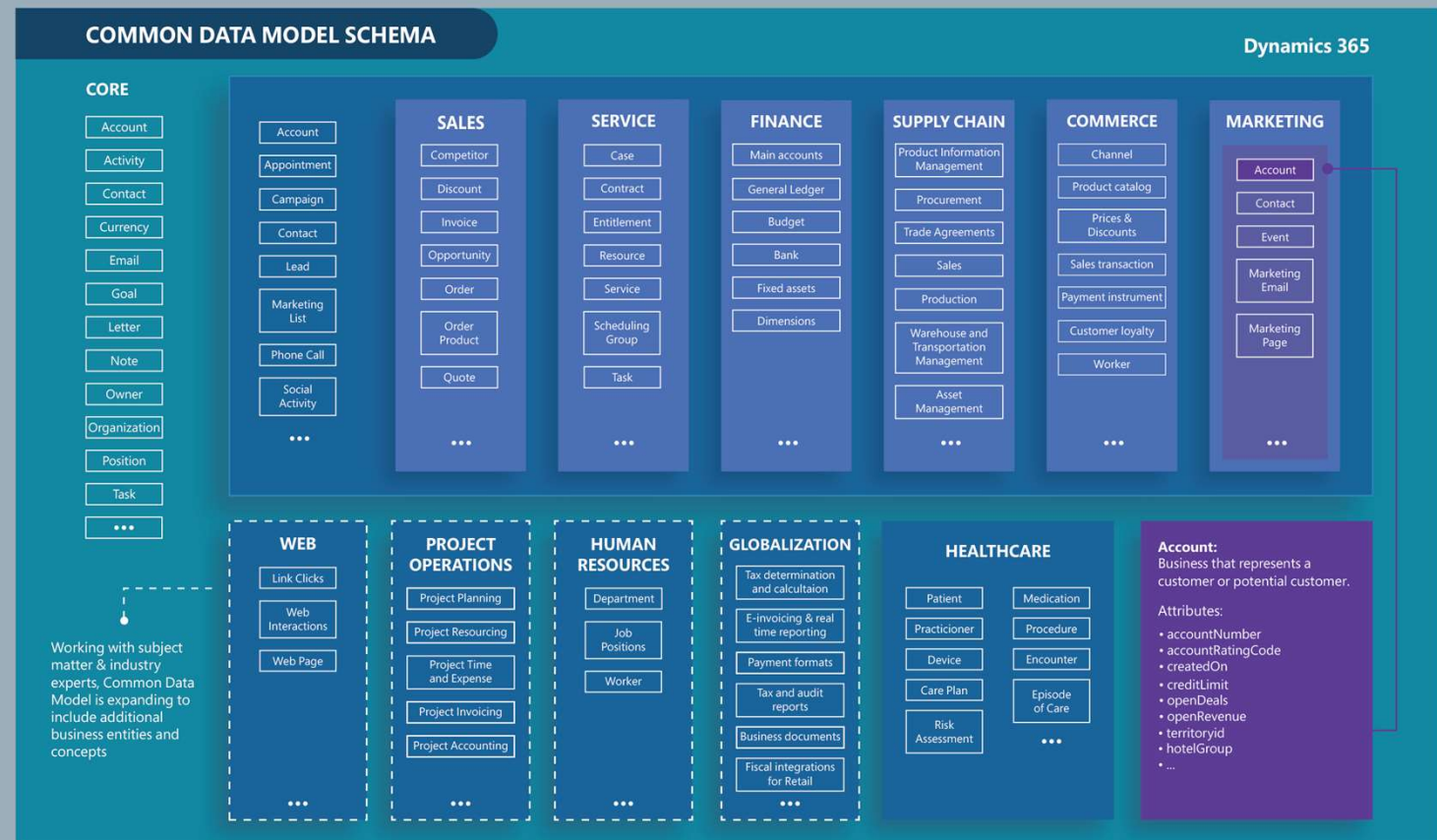
- It is where the data is **stored** and **managed**
- It is the “**database**”



Common Data Model

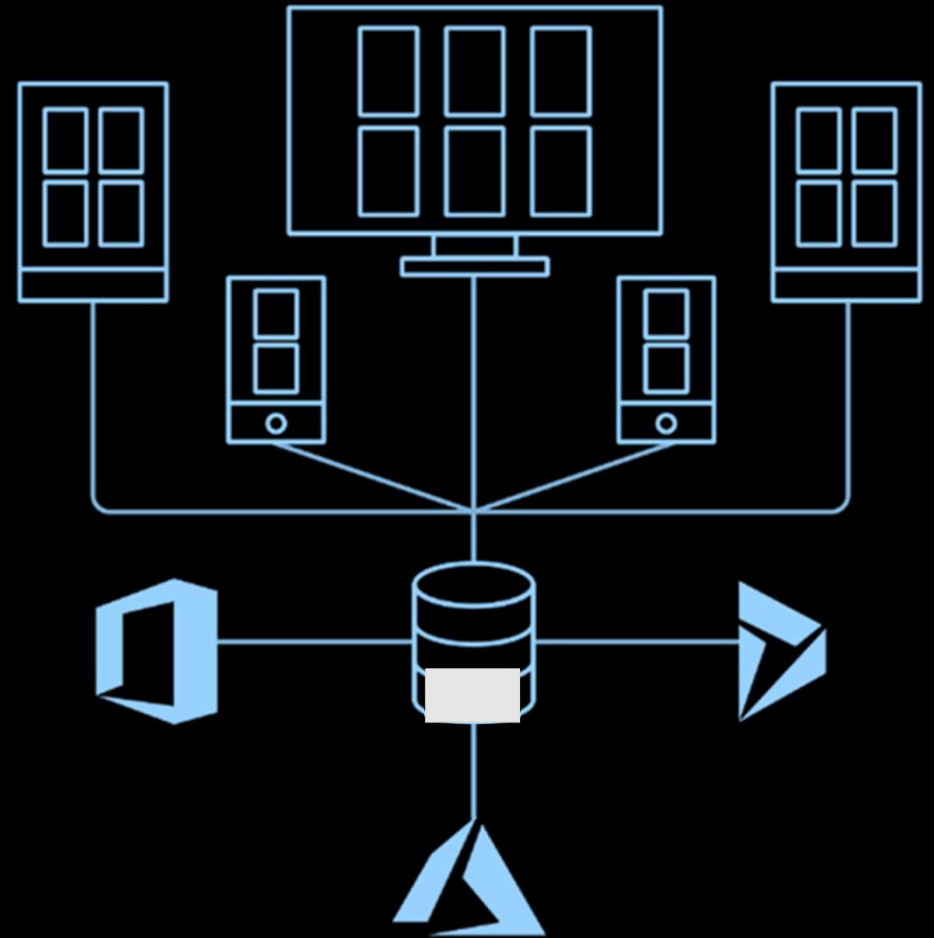


INTEGRATE & DISAMBIGUATE DATA WITH THE COMMON DATA MODEL





Common Data
Service



Founding members



Power BI



PowerApps



Power Automate



Common Data
Service



Common
Data Model



Power Virtual
Agent



PowerApps
Portal



AI Builder



Power BI



PowerApps



Power Automate



Common Data
Service



Common
Data Model



Power Virtual Agent

Power Virtual Agents | Atom

Home

Topics

Entities

Analytics

Publish

Manage

Test bot

Track between topics

Reset

Chat

Hello

Just now

Hi! I'm a virtual agent. I can help with account questions, orders, store information, and more.

Just now

If you'd like to speak to a human agent, let me know at any time.

Just now

So, what can I help you with today?

Just now

Type your message

Hide bot

Atom

Get started

Trigger Phrases(0)

Add trigger phrases

Message

I've earned to me look that on

1. Author topics

Start by editing the topics provided with your bot or create the topics that best fit your business.

Customize your greeting

Go to Topics

Facebook

Twitter

LinkedIn

Slack

WhatsApp

Telegram

Skype

Outlook

Office 365

SharePoint

OneDrive

Teams

Power BI

Excel

Word

PowerPoint

OneNote

Outlook

SharePoint

OneDrive

Teams

Power BI

Excel

Word

PowerPoint

OneNote

2. Publish your bot

Try out your bot on a demo website (no IT support needed). Later, configure more bot channels to engage with your customers.

Go to Publish

Total Sessions

6792

81%

Resolution rate

65%

21%

Engagement over time

Engaged

Unengaged

3. Monitor performance

View metrics to understand how well your bot is serving your customers and how you can improve it.

Go to Analytics

Learn more

Power Virtual Agents documentation

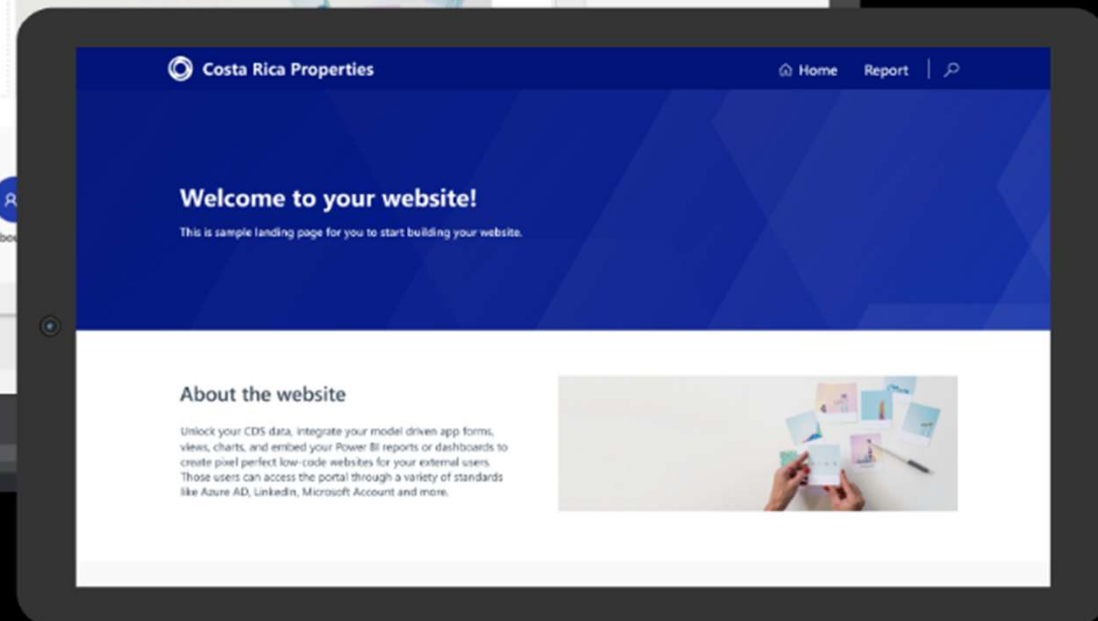
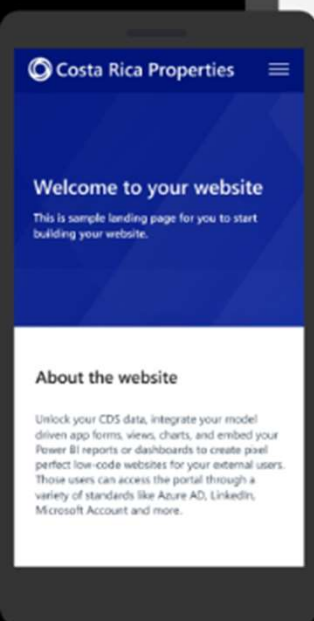
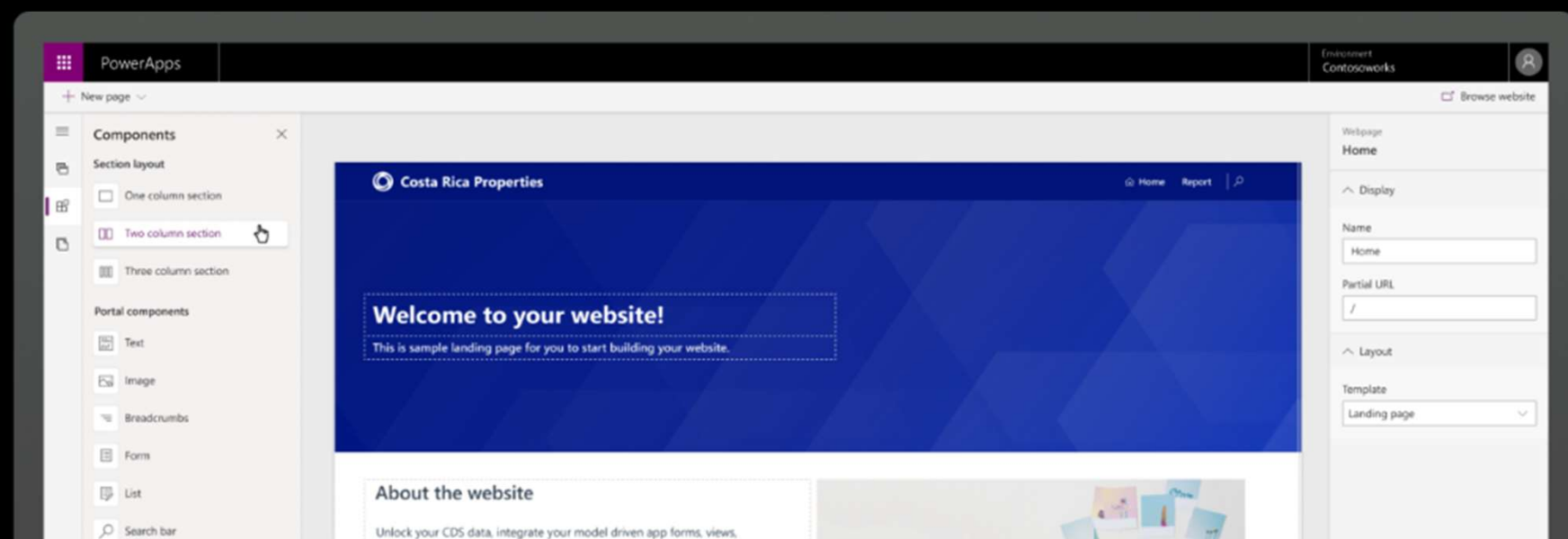
Tell us what you think

Ask questions and learn from the community

Support community

Share your thoughts and ideas

Idea forum



-
- Home
- Learn
- Apps
- Create
- Data
- Business logic
- AI Builder
- Build
- Models
- Solutions

Enhance your business with AI

Add intelligence to your business. Create tailored AI models to automate processes and find insights. [Learn more](#)

Make your own AI model

Prediction
Predict whether something will happen.

Form Processing (preview)
Read and save information from standard documents.

Object Detection (preview)
Recognize and count things in images.

Text Classification (preview)
Categorize text by its meaning so it's easier to analyze.

Get straight to productivity

Business Card Reader
Automatically process business card information

Key Phrase Extraction (preview)
Extract the key talking points from text

Language Detection (preview)
Identify the language being used in text

Sentiment Analysis (preview)
Analyze positive/negative sentiment in text

Text Recognizer (preview)
Automatically process text from images



Power Virtual
Agent



PowerApps
Portal



AI Builder



Power BI



PowerApps



Power Automate



Common Data
Service



Power BI



PowerApps



Power Automate



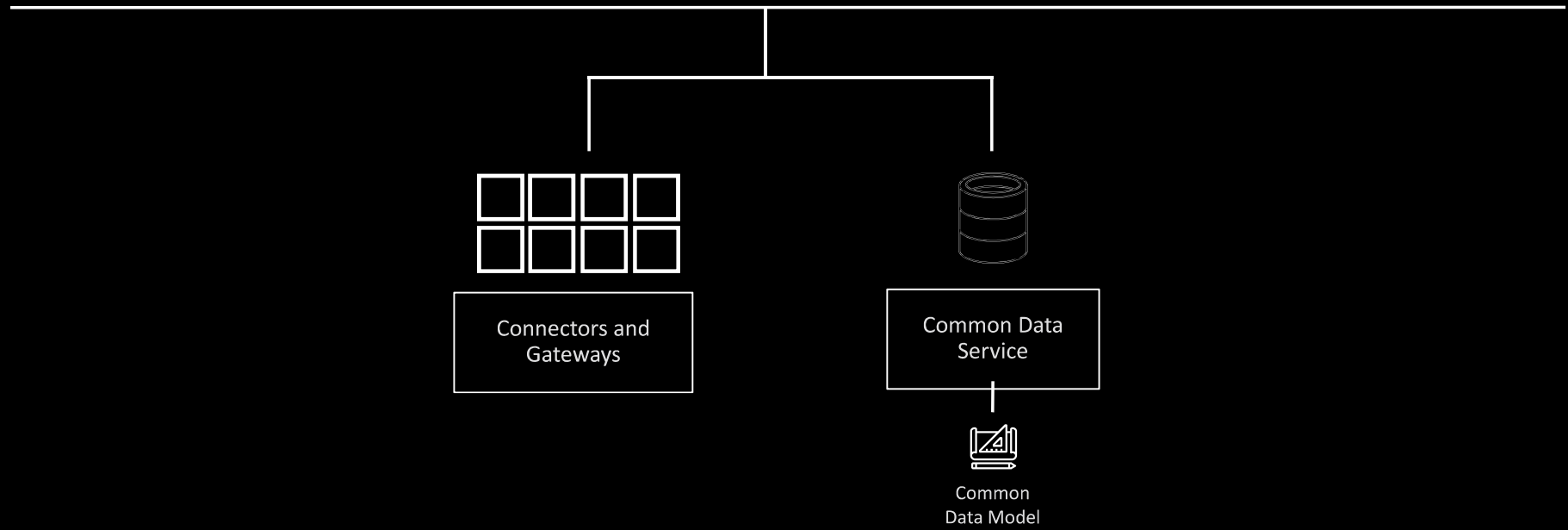
Power Virtual
Agent



AI Builder



PowerApps
Portal





Dynamics 365



Office 365



Power BI



PowerApps



Power Automate



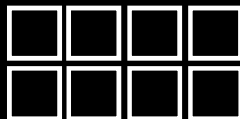
Power Virtual
Agent



AI Builder



PowerApps
Portal



Connectors and
Gateways



Common Data
Service



Common
Data Model

Power Platform in action

Presented by: Ravi Kashyap

 **POWER
PlatformUG**
Power BI • Power Apps • Power Automate

 **D365UG**

Power Take Away

Power Platform

<https://docs.microsoft.com/en-us/power-platform/>

Power Apps

[30 day trial](#)

[Community Plan](#)

Power BI

<https://docs.microsoft.com/en-us/power-bi/>





BI - Gold Coast Style

Tuesday March 17th 2020

Report Simple

- Introduction to Power BI and reporting automation
- Why choose for Power BI?
- Power BI use cases – Get the most out of your data
 - Financial reporting with customized budgets
 - Process Mining of the Sales Pipeline
 - Marketing & Digital Dashboard
- Demo: How to create your first report?

PowerAppsUG



**Thank You for
attending, Let's have a
drink!**

